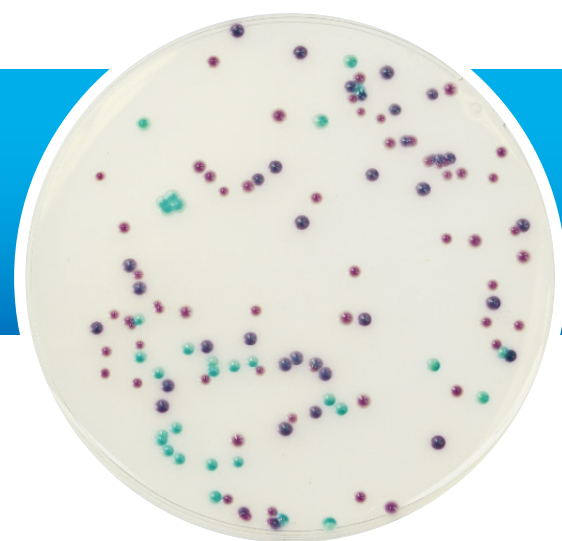


PP3010 COLOREX™ CANDIDA



In recent years there has been an increase in the number of immuno-compromised patients, which has in turn led to an increased rate of infections associated with *Candida* species. There were 1700 reported cases of candidaemia in 2014 with *C.albicans* accounting for 49%, *C.glabrata* for 26%, *C.parapsilosis* for 10% and *C.tropicalis* for 4% in 2013.⁽¹⁾

The marked increase of *Candida* related infections, a 62% increase in reported cases since 2002, coupled with the observed shift in infections due to non-albicans species, which are inherently resistant to Amphotericin B and other azole-based antifungals, has led to the requirement for rapid, accurate diagnosis of infection and the causative micro-organism.

Colorex™ *Candida* was formulated specifically for the detection and isolation of clinically significant *Candida* species by means of colonial colour and morphology in 48hrs. Colorex™ *Candida* allows for the recognition of a minor *Candida* population within a mixed population as well as the pre-dominant species thereby allowing for a patient specific treatment plan at the earliest possible opportunity.

Recent developments in culture media have given rise to the use of chromogenic substrates as a means of differentiating bacteria and yeasts on primary culture. This is one such medium and has been developed with the aim of simplifying the isolation and presumptive identification of *Candida* spp. Appearance and differentiation of *Candida* spp. is readily apparent by distinctive colonial colours:

- C.albicans* – Green colonies
- C.glabrata* – Pink colonies
- C.tropicalis* – Blue colonies
- C.krusei* – Large pink/rose colonies

⁽¹⁾ PHE. Voluntary surveillance of candidaemia in England, Wales and Northern Ireland: 2013. Health protection Report 2014; 8(37): Infection Report

Formula	gm/litre	Properties	
Peptones	10.2	Appearance	Firm Gel
Chromogenic mix	22.0	Colour	Straw
Agar	15.0	pH	6.1 ± 0.2
Chloramphenicol	0.5	Storage	2 - 8°C
		Shelf life	70 days

Quality Control Test Organisms	Ref. No.	Result
<i>Candida albicans</i>	NCPF 3179	Green Colonies
<i>Candida glabrata</i>	NCPF 3309	Pink Colonies
<i>Candida tropicalis</i>	NCPF 3290	Blue Colonies

Recommended incubation : Aerobically at 37°C ± 1°C for 48 - 72 hours