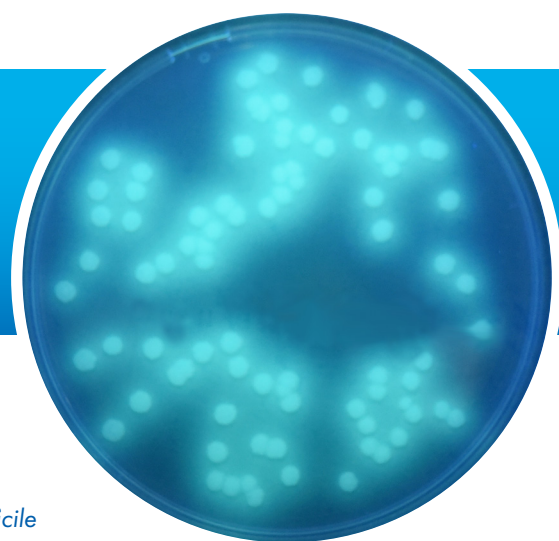


PP3087 COLOREX™ C.DIFFICILE



Clostridium difficile is the most prevalent nosocomial pathogen in several countries, including the UK. This pathogen is generally linked with cases of pseudomembranous colitis and nosocomial or antibiotic-associated diarrhoea. Although the introduction of mandatory surveillance has led to an overall reduction in *C.difficile* infections, for the period 2014/15, Public Health England reported a 6% increase in the number of *C.difficile* infections compared to the previous year.⁽¹⁾

Colorex™ *C.difficile* is a selective fluorogenic medium for the isolation of *C.difficile* from clinical specimens and environmental specimens. This medium is specially formulated to allow for recovery of presumptive positive isolates in 24 hours instead of the traditional incubation period of 48 hours.⁽²⁾ The medium has demonstrated a high level of sensitivity in a recent study compared to a traditional *C.difficile* culture medium.⁽³⁾

C.difficile – Colourless colonies. Fluorescence +ve under UV (365nm)
Other Gram –ve & Gram +ve bacterial species – Inhibited
Yeasts - Inhibited

- ⁽¹⁾ PHE. Annual Epidemiological Commentary: Mandatory MRSA, MSSA and E.coli bacteraemia and *C.difficile* infection data, 2014/15. 9th July 2015
⁽²⁾ Van Broeck, J. et al. Evaluation of a new 24h culture medium for the isolation of *Clostridium difficile* from stool samples. Paper Poster P0731, 24th ECCMID, May 2014
⁽³⁾ Roux, H. et al. Comparison of CHROMagar *C.difficile* and taurocholate-CCFA media for isolation of toxigenic *Clostridium difficile* from stools. Poster 2053, 114th General Meeting ASM, May 2014

Formula	gm/L	Properties	
Peptones, Yeast Extract & Selective Mix	25.0	Appearance	Firm Gel
Salts	9.0	Colour	Pale straw
Agar	15.0	pH	7.8 ± 0.2
Growth factors	4.0	Storage	2 – 8 °C
Chromogenic mix	1.7	Shelf life	56 days

Quality Control Test Organisms	Ref. No.	Result
<i>Clostridium difficile</i>	NCTC 11204	Colourless colonies. With Fluorescence +ve under UV (365nm)
<i>Escherichia coli</i>	NCTC 12241	Inhibited
<i>Clostridium perfringens</i>	NCTC 8237	Inhibited
<i>Enterococcus faecalis</i>	NCTC 12697	Inhibited
<i>Candida albicans</i>	NCPF 3179	Inhibited

Recommended Incubation: Anaerobically at 37°C ± 1°C for 18 - 24 hours.